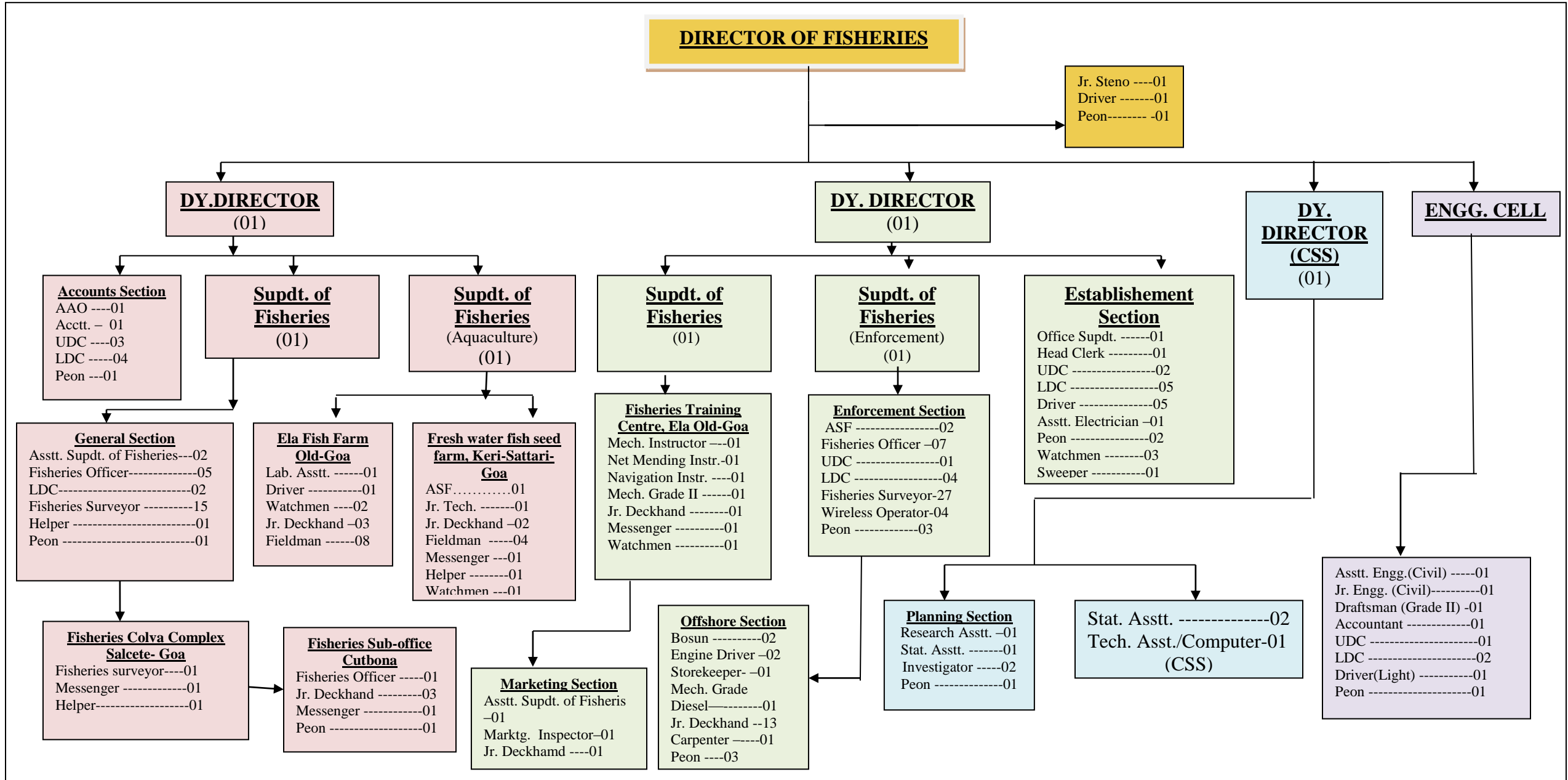


STRUCTURAL ORGANISATION OF THE OFFICE



SANCTIONED STRENGTH OF STAFF

1. Group "A" (Gazetted) -----	3 + 1 (C.S. Scheme)	=	4
2. Group "B" (Gazetted) -----	7	=	7
3. Group "C" (Non-Gazetted) -----	146 + 3 (C.S. Scheme)	=	149
4. <u>Group "D" (Non-Gazetted) -----</u>	<u>41</u>	=	<u>41</u>
			Total = 201